

ROTHERHAM BOROUGH COUNCIL – REPORT TO COMMISSIONERS

| | | |
|----|--------------------------------|---|
| 1. | Meeting: | Commissioner Kenny’s Meeting |
| 2. | Date: | 8 June 2015 |
| 3. | Title: | Local Development Scheme |
| 4. | Directorate: | Environment & Development Services |
| 5. | Advisory Cabinet Member | Councillor Lelliott |

6. Summary

6.1 The Local Development Scheme sets out a project plan for the preparation, adoption and review of the Rotherham Local Plan. The report outlines an update to the Local Development Scheme which has been produced to reflect the revised timetable for publication and submission of the Sites & Policies document to government.

7. Recommendations

7.1. That the revised Local Development Scheme be endorsed.

7.2. That the revised Local Development Scheme be forwarded to Council for approval.

8. Proposals and Details

- 8.1 The Planning and Compulsory Purchase Act 2004 (as amended) requires the local planning authority to prepare and maintain a Local Development Scheme.
- 8.2 The Local Development Scheme (LDS) sets out an updated and revised project plan for the preparation of the Development Plan Documents (DPDs) that will comprise the Rotherham Local Plan. The LDS is intended to:
- set out the subject matter, geographic coverage, development plan status and inter-relationships of Local Plan documents and details of any to be prepared jointly with other local planning authorities
 - establish priorities for the Local Plan, to steer associated work programming and resource allocation
 - give a timetable, and set milestones, for the preparation and review of documents
- 8.3 The LDS was last formally revised in September 2014 (the former Cabinet 24/9/14, minute C54) to reflect the adoption of the Core Strategy by the Council on 10 September 2014 as part of the development plan.
- 8.4 This latest update reflects the revised timetable for publication and submission of the Sites & Policies document.
- 8.5 At future examinations of the Council's Local Plan, one of the legal compliance checks that the planning inspector will carry out is that the document has been produced in conformity with the LDS. It is therefore important to ensure a revised and up to date LDS is in place in time for publication and submission of the Sites & Policies document programmed for 2015/16.
- 8.6 The revised Local Development Scheme is attached at **Appendix 1**.

9. Finance

- 9.1 There are no direct financial implications arising from this report.

10. Risks and Uncertainties

- 10.1 Approval of the Local Development Scheme is sought to enable progress towards adoption of programmed Local Plan documents.
- Rotherham's Core Strategy is now in place and helps provide an up-to-date planning policy framework for the Borough's future growth and development. Progress on the supporting Sites & Policies document is vital to complete the Local Plan and bring forward the development sites required to implement the Core Strategy.

- Having a complete Local Plan in place will provide a steer for all future development and any neighbourhood plans that may emerge under the provisions of the Localism Act.
- Failure to make progress with the Local Plan risks delayed provision of the new homes and employment opportunities that the Borough needs.

11. Policy and Performance Agenda Implications

11.1 The implementation of the Local Plan will make a positive contribution to all of Rotherham's Regeneration priorities

- providing sufficient good quality homes
- ensuring well designed, decent affordable housing
- providing employment land to meet the needs of the modern economy and support sustainable communities through access to employment opportunities
- promoting the "town centre first" policy approach to help the regeneration and renaissance of Rotherham Town Centre

12. Background Papers and Consultation

Appendix 1: Local Development Scheme revised June 2015

Contact name:

Andy Duncan, Planning Policy Manager
01709 823830, andy.duncan@rotherham.gov.uk

Appendix 1: Local Development Scheme revised June 2015

ROTHERHAM LOCAL PLAN

LOCAL DEVELOPMENT SCHEME

Revised June 2015

CONTENTS

- 1. Introduction**
 - Background
 - Purpose of the Local Development Scheme

- 2. Local Plan programme**
 - Timetable
 - Neighbourhood Plans
 - Review
 - Development Plan Document profiles

- 3. Monitoring and review**
 - Annual Monitoring Report

Maps

Map 1: Rotherham DPD geographic coverage

Map 2: Barnsley, Doncaster and Rotherham Joint Waste Core Strategy DPD geographic coverage

1. Introduction

Background

Rotherham's current development plan consists of the Rotherham Core Strategy, the Barnsley, Doncaster and Rotherham Joint Waste Core Strategy and those parts of the Rotherham Unitary Development Plan (UDP) "saved" under the terms of the Planning and Compulsory Purchase Act 2004 by a direction from the Secretary of State dated 17 July 2007.

The regional strategy, the Yorkshire and Humber Plan (2008), was formally revoked by the Secretary of State on 22 February 2013. The regional strategy is therefore no longer part of the development plan for Rotherham.

The requirements for the Local Plan to replace the UDP are set out in the Planning and Compulsory Purchase Act 2004 (as amended) and the National Planning Policy Framework (NPPF). The Local Plan consists of a portfolio of Development Plan Documents (DPDs) together with documents concerned with the management of the plan making process.

Rotherham Local Plan documents produced to date include:

- the Local Development Scheme (and subsequent revisions)
- the Statement of Community Involvement (revised)
- Annual Monitoring Reports
- the Barnsley, Doncaster and Rotherham Joint Waste Core Strategy (DPD)
- the Rotherham Core Strategy (DPD)

The Statement of Community Involvement was formally adopted by the Council on 14 June 2006. It was withdrawn and replaced with a revised version by the Council on 3 June 2015.

The Barnsley, Doncaster and Rotherham Joint Waste Core Strategy was formally adopted on 8 March 2012.

The Rotherham Core Strategy was formally adopted by the Council on 10 September 2014.

Purpose of the Local Development Scheme

This document sets out an updated and revised project plan for the preparation of the DPDs that will comprise the Rotherham Local Plan. The LDS is intended to:

- set out the subject matter, geographic coverage, development plan status and inter-relationships of Local Plan documents and if any are to be prepared jointly with other local planning authorities

- establish and reflect priorities for the Local Plan to steer associated work programming and resource allocation
- give a timetable and set milestones for the preparation and review of documents

The LDS is subject to periodic review and may be amended due to legislative changes or any requirement to carry out significant additional technical work in response to consultation on draft DPDs.

2. Local Plan programme

Timetable

The Rotherham Local Plan programme is focused on the following development plan documents (DPDs):

- Sites & Policies DPD and Policies Map
- Local Plan Review

The programme is illustrated in the timetable overleaf and expanded in the detailed profiles for each DPD included within this section.

Neighbourhood Plans

Local communities can now prepare plans for their local areas themselves if they wish to do so. Any community neighbourhood plans will form part of the statutory development plan for those areas of the borough, once they have passed through independent examination and a local community referendum.

The local planning authority does not prepare Neighbourhood Plans, but the Council does have a duty to provide advice and technical assistance to community groups engaged in Neighbourhood Planning, particularly in relation to the initial designation of neighbourhood areas and neighbourhood forums, as well as the examination process and holding referendums. At time of writing, no requests for the designation of a neighbourhood area or forum have been received by the Council.

Review

Legislation requires the Council to prepare and keep under review a Local Plan. The Council is currently focused on adopting the Sites & Policies document to complete the Local Plan. Following adoption of the Site & Policies document, the Council may commence a review of the Local Plan. An indicative programme is included below but this is subject to confirmation and the availability of resources.

The Council is in discussion with neighbouring authorities over the review of the Barnsley, Doncaster and Rotherham Joint Waste Core Strategy (the Joint Waste Plan). However, no decision has been made at this stage and therefore a programme for review of the Joint Waste Plan is not included in this current LDS.

An up-to-date timetable is maintained on the Council's website at:

<http://www.rotherham.gov.uk/localplan>

DPD profiles

| Sites & Policies DPD and Policies Map | |
|--|--|
| Document details | |
| Role and content | Identifies sites proposed for development to deliver the Core Strategy together with development management policies |
| Status | DPD |
| Chain of conformity | To conform with national planning policy and the Core Strategy |
| Geographic coverage | Rotherham Metropolitan Borough |
| Timetable and milestones | |
| Commencement and pre-production | Jan 2007 |
| Call for Sites | Jan 2007 – Nov 2008 |
| Release of Sites as part of the evidence base to support public consultation on Core Strategy Revised Options and Sustainability Appraisal | May – Aug 2009 |
| Public consultation on Issues and Options | July – Sept 2011 |
| Consultation with statutory bodies on the scope of the Sustainability Appraisal | June – Sept 2012 |
| Public consultation on Draft Sites & Policies DPD and Policies Map and Sustainability Appraisal | May – July 2013 |
| Public consultation on Final Draft Sites & Policies DPD and Policies Map and Sustainability Appraisal | Oct – Nov 2014 |
| Publication of Sites & Policies DPD and Policies Map for "soundness" representations and Sustainability Appraisal | Sept – Nov 2015 |
| Submission of Sites & Policies DPD and Policies Map and Sustainability Appraisal | Feb – Mar 2015 |
| Examination in Public | June 2016 |
| Receipt of Inspector's report | Sept 2016 |
| Adoption of the DPD | Dec 2016 |
| Arrangements for production | |
| Lead responsibility | Planning Policy Team, Rotherham MBC |
| Management arrangements | Production stages guided by Member Steering Group recommending approval by Commissioners and adoption by full Council |
| Resources required | Produced internally with external input in relation to certain evidence base studies |
| Approach to involving the community and stakeholders | Outlined in the SCI with emphasis on front loading reflecting the aims and programmes of the community strategy and other principal stakeholders |
| Post production | |
| Monitoring and review mechanisms | Via the Annual Monitoring Report |

| Local Plan Review | |
|--|---|
| Document details | |
| Role and content | Sets out the vision, objectives and strategic policies for the future spatial development of the Borough, including targets for new housing and employment land. Identifies sites proposed for development to deliver these targets together with development management policies |
| Status | DPD |
| Chain of conformity | To conform with national planning policy |
| Geographic coverage | Rotherham Metropolitan Borough |
| Timetable and milestones | |
| Commencement and pre-production | Jan 2017 |
| Consultation with statutory bodies on the scope of the Sustainability Appraisal | Jan – Mar 2017 |
| Public consultation on Issues and Options | Sept – Oct 2017 |
| Public consultation on Draft Local Plan and Sustainability Appraisal | tbc |
| Publication of Local Plan for "soundness" representations and Sustainability Appraisal | tbc |
| Submission of Local Plan and Sustainability Appraisal | tbc |
| Examination in Public | tbc |
| Receipt of Inspector's report | tbc |
| Adoption of the DPD | tbc |
| Arrangements for production | |
| Lead responsibility | Planning Policy Team, Rotherham MBC |
| Management arrangements | Production stages guided by Member Steering Group recommending approval by Commissioners and adoption by full Council |
| Resources required | Produced internally with consultant input in relation to certain evidence base studies |
| Approach to involving the community and stakeholders | Outlined in the SCI with emphasis on front loading and fully reflecting the aims and programmes of community strategy and other principal stakeholders |
| Post production | |
| Monitoring and review mechanisms | Via the Annual Monitoring Report |

3. Monitoring and review

Annual Monitoring Report

Continuous monitoring and review are essential to the plan, monitor and manage process in the successful delivery of the spatial vision and objectives of the Local Plan. The Annual Monitoring Report (AMR) has an important dual role in tracking progress in the preparation of DPDs as well as monitoring outputs and trends, contributing to a broader evidence base against which policies and their implementation can be evaluated.

The AMR is published at the end of each calendar year, reporting progress made in the preceding financial year. The AMR:

- specifies how the Council is performing within the timescales for DPD preparation set out in the LDS
- informs the rolling forward of the Local Plan programme in the LDS
- provides an update on the extent of the remaining parts of the UDP.

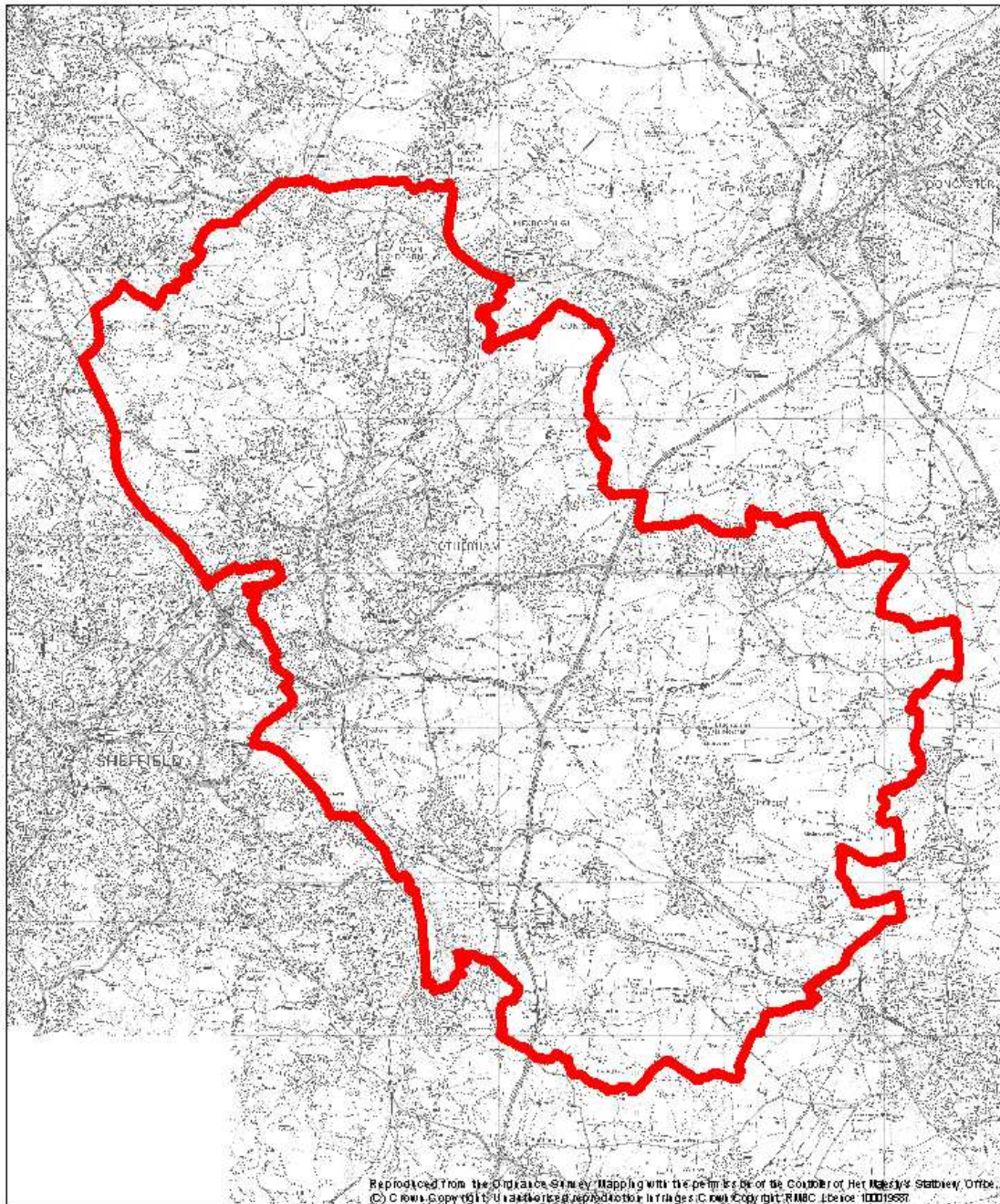
As well as assessing the Council's progress in implementing the Local Development Scheme, the AMR also:

- Provides details of how well policies are being achieved by tracking their impact on relevant targets and whether policies need adjustment in the light of changes to national policy. In particular, the AMR will include trajectories of forecast future housing supply against strategic housing requirements.
- Provides an updated list of technical studies, reports and other relevant publications contributing to the evidence base supporting Local Plan preparation.
- Indicates the performance of infrastructure providers against the infrastructure delivery planning requirements set out in the Core Strategy.

Annual Monitoring Reports are published on the Council's website at:

<http://www.rotherham.gov.uk/localplan>

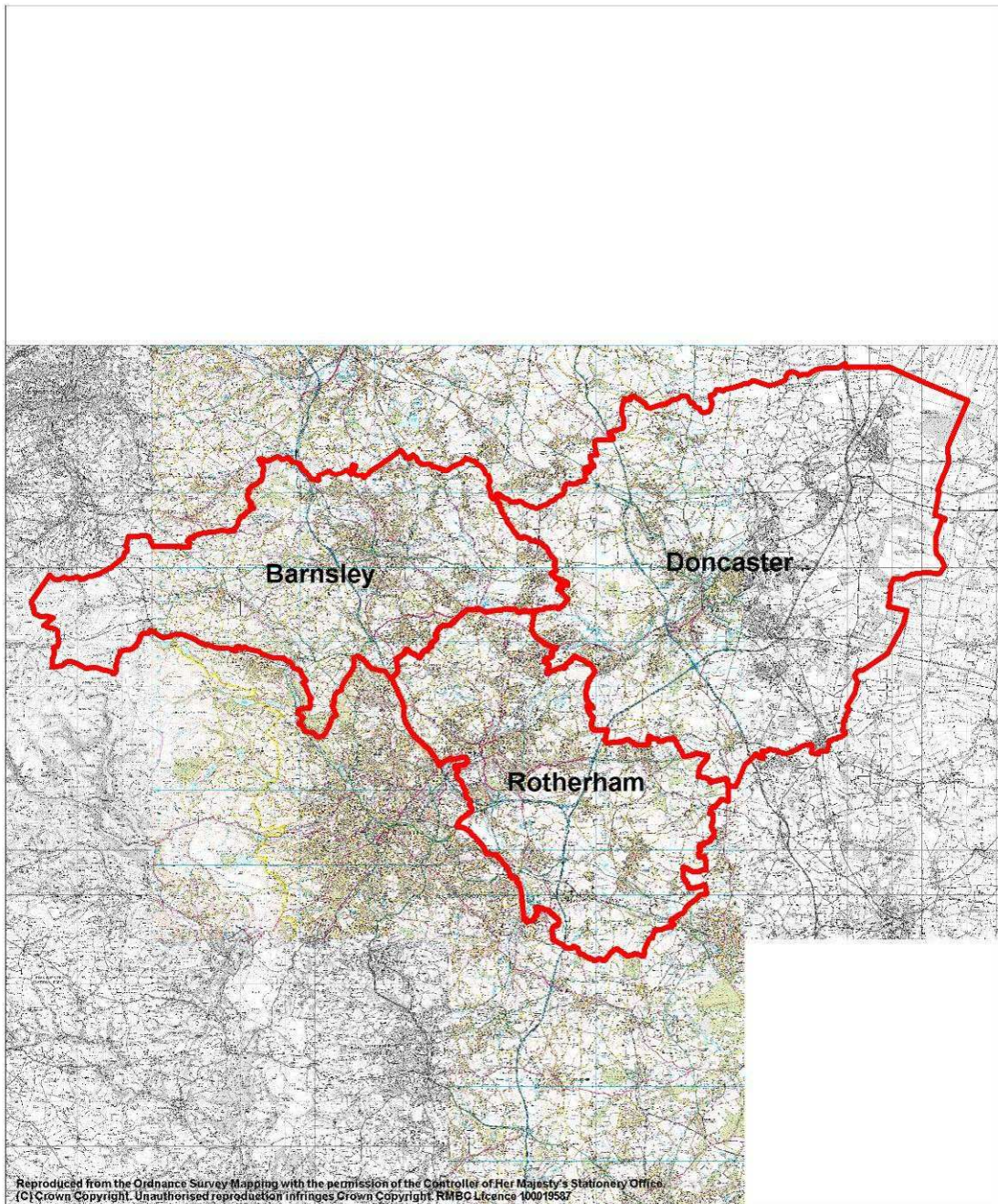
Map 1: Rotherham DPD geographic coverage



Core Strategy DPD
Sites & Policies DPD
Policies Map

— Rotherham Borough Boundary

Map 2: Barnsley, Doncaster and Rotherham Joint Waste Core Strategy DPD geographic coverage



Barnsley, Doncaster & Rotherham
Joint Waste Core Strategy DPD

— Borough Boundaries